



Visual Play Audit Service

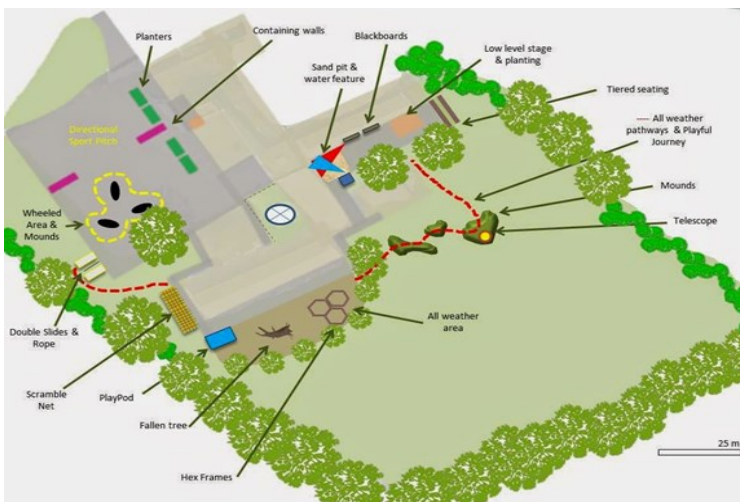
An auditing and assessment service to help schools make the most of their school grounds & support children's play

We have been working with schools and early years settings since 2007, helping them to create positive play environments for children. The visual play audit service uses a range of different playground methodologies to assess the 'play value' of a space and provides a variety of informed, non-biased recommendations that extends the play offer for children.



What does it include?

The process involves a small team visiting a school lunchtime, identifying and assessing the quality of play provision currently on offer. The audit report is then compiled, which usually takes approximately two weeks, and fed back to the school in person, at a convenient date. This feedback usually takes approximately 90 mins. We charge £600 + travel + VAT.



The audit is an A3 pictographic report that identifies:

- Types of play that are catered for and what the environment affords, as well as identifying what types of play or aspects of environment are missing.
- Physical improvements that could be made to the environment. The report recommends low cost, high impact solutions as well as longer term considerations.
- Logistical changes that would improve the flow over lunchtime and the play opportunities on offer, often providing solutions to problems on the playground.

"This has been incredibly useful process for us to do, we now understand how to utilise our play space much more effectively and the visual style of the report really brings it to life." Head Teacher

Further information

If you would like to find out more about this service please contact the Scrapstore Play Services at Children's Scrapstore on:



0117 914 3002



www.childrensscrapstore.co.uk



playteam@childrensscrapstore.co.uk



www.facebook.com/SSPlayService

